

Work and Learning in the Era of AI

By Inhyok Cha, Ph.D,



Introduction to AI

Artificial Intelligence (AI) is revolutionizing the way we work and learn.

It refers to the development of computer systems that can perform tasks that normally require human intelligence.






State of the Art of AI: GPT & Bard

The state-of-the-art AI, exemplified by **LARGE LANGUAGE MODELS** like OpenAI's GPT and Google Bard, is capable of understanding and generating human-like text.

These models are being used in diverse applications, such as customer service, content generation, and even tutoring.

ChatGPT actually helped ,me draft this presentation!

Limitations of Large Language Models

- Despite their capabilities, large language models have limitations.
 - They lack true understanding,
 - they can produce incorrect or nonsensical responses,
 - they depend heavily on the quality of their training data, and
 - they can inadvertently perpetuate biases present in that data.
- 
- A large yellow triangle is positioned in the bottom right corner of the slide, pointing towards the top right.

AI and Workforce Transformation

AI is transforming various industries, such as healthcare, finance, manufacturing, and more. '

It is streamlining processes, increasing productivity, and creating new job opportunities.





AI will revolutionize learning, too

AI is revolutionizing education and learning.

It enables personalized learning experiences, adaptive assessments, and provides access to educational resources from anywhere in the world.



Historical Impact of Tech on Work & Learning



Throughout history, technological advances have transformed work and education.



The Luddites of the 19th century, for example, protested against the introduction of steam-engines and related machinery.



But these advances ultimately led to increased productivity and new job opportunities.

IC

Write me a VBA code to create powerpoint presentation about work and learning in the era of AI. Make the text based on your knowledge of this subject. No placeholders. Make some references and analogies to impact of technological advances on work and learning in earlier eras, perhaps alluding to the Luddites movement. Make a reference to the state of the art of AI, especially on large language models such as chatgpt and Bard and what they can do. List also current limitations of large language models. List benefits and opportunities versus risks for both workers and employers. Also, list benefits and opportunities versus risks for both students and educators. Touch upon psychological impacts to workers, students and educators, of the rapid advances in AI. Make references to regulations regarding AI that may impact work or learning in different countries such as Korea, the U.S. and Germany. Also make predictions on what might happen to work and learning in 10 years if current pace of AI advances continued. Use relevant graphics as backgrounds or to emphasize specific points. Make a total of 9 slides.



Sure, I can help you draft a VBA code to create a PowerPoint presentation on the given topic.





I apologize for any misunderstanding. To achieve what you're asking, the content has to be sufficiently detailed. Here is an attempt to include longer, more comprehensive content in the array. Please note that this is a high-level summary and further elaboration might be required to fully cover each topic.



vba

Copy code

```
Sub CreatePPT()
```

```
    Dim pptApp As PowerPoint.Application
```

```
    Dim pptPres As PowerPoint.Presentation
```

```
    Dim pptSlide As PowerPoint.Slide
```

```
    Dim pptLayout As CustomLayout
```

```
    Dim i As Integer
```

```
    Set pptApp = New PowerPoint.Application
```

```
    Set pptPres = pptApp.Presentations.Add
```

```
    Dim titles As Variant
```

```
    Dim contents As Variant
```

```
    titles = Array("Work and Learning in the Era of AI", "Historical Impact
```

```
                  "Limitations of Large Language Models", "AI: Benefits & C
```

```
                  "AI: Benefits & Challenges for Students & Educators",
```

```
                  "Regulation of AI in Work & Learning: A Global Perspectiv
```

Regenerate response

Send a message...





Benefits and Risks in Work

Benefits abound for employers and workers, such as:

- It can automate repetitive tasks,
- improve efficiency, and
- enable the development of new industries.

However, there are risks, such as

- data privacy and intellectual property concerns
- job displacement, and
- Increase in skill gaps, and emergence of new AI-divides

Ensuring a smooth transition requires upskilling programs and new job opportunities.

Benefits and Risks in Learning

AI presents exciting opportunities in education, too

- It can personalize learning experiences,
- provide instant feedback, and
- enhance accessibility.

However, there are risks, such as

- privacy concerns
- reduction of human interactions
- Exposure to knowledge manipulations

Ethical considerations are vital in leveraging AI for educational purposes.



Psychological Impacts of AI Advances

- The rapid advances in AI have significant psychological impacts on workers, students, and educators
- The fear of job displacement and uncertainty can lead to anxiety and stress among workers.
- Students may experience concerns about the relevance of their skills in an AI-driven job market.
- Educators may face challenges in adapting their teaching methods to incorporate AI technologies.



Regulation of AI : A Global Perspective

AI regulations vary across countries, influencing the adoption and implementation of AI in work and learning.

- Korea: Korea has taken significant steps to promote AI development, including the establishment of AI ethics committees and the enactment of AI-related laws.
- United States: The U.S. emphasizes a flexible regulatory approach, promoting innovation while addressing concerns about privacy, bias, and ethical considerations.
- Germany: Germany has a strong focus on data protection and ethical AI, ensuring transparency and fairness in AI systems through regulations like the GDPR.



Prediction for the Future

If the current advances in AI continue, we can expect significant transformations in work and education.

- Work:
 - AI will automate routine tasks, leading to job restructuring and the emergence of new roles.
 - Upskilling and reskilling programs will be crucial to navigate the changing job landscape.
- Education:
 - AI will enable personalized and adaptive learning experiences, improving accessibility and fostering lifelong learning.
 - However, ethical considerations and human guidance will remain essential for effective education.

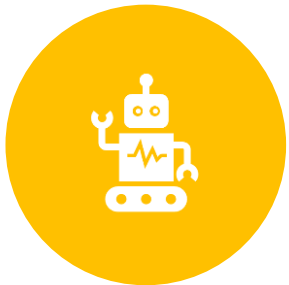
Conclusions



The era of AI brings both opportunities and challenges to work and learning.



Regulations play a crucial role in shaping the adoption and ethical use of AI in different countries.



Looking ahead, AI-driven changes to work and education will require continuous upskilling and the thoughtful integration of AI



By embracing AI responsibly, we can harness its potential to create a more productive, inclusive, and sustainable future.